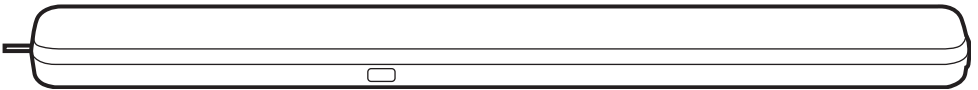


WINPLUS®

**LED INDOOR
SHOP LIGHT™**
WITH MOTION SENSOR

ITM. / ART. 1149063
Model: LM55973

CARE & USE INSTRUCTIONS



**IMPORTANT, RETAIN FOR
FUTURE REFERENCE: READ CAREFULLY**

For assistance with assembly or installation, parts and customer service, call us at 1-866-294-9244 (English),
Monday - Friday, 8am - 5pm Pacific Time, email us at info@winplususa.com

820 South Wanamaker Ave., Ontario, CA 91761, USA

www.winplus.com

This light is operated by a Smart Sensor Control. It will automatically switch on when motion is detected and will turn off automatically when there is no movement is detected within the preset time. If multiple lights are linked together, only the light(s) detecting the motion will turn on (not all linked lights).

Important Safety Instructions:

Please read the following safety information before use.

To reduce risk of fire, electric shock, or injury to persons:

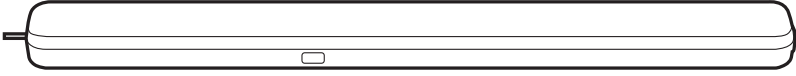
- Grounded lights must be plugged into an outlet properly installed and grounded in accordance with all codes and ordinances.
- Improperly connecting the grounding wire can result in the risk of electric shock. Do not modify the power cord plug provided with the product. Never remove the grounding prong from the plug .
- Do not use the light if the power cord or plug is damaged. If damaged, have it repaired by a service facility before use. If the plug does not fit the outlet, have a proper outlet installed by a qualified electrician.
- Disconnect the power cord plug from the power source before making any adjustment or changing accessories. Do not attempt to install product while plugged in.
- Do not abuse the power cord. Never use the power cord to carry the light or pull the plug from an outlet. Keep the power cord away from heat, oil, sharp edges, or moving parts.
- Always refer to a qualified electrician if re-wiring the power cable.
- Not for use with dimmer packs, timing devices, motion detectors, or lighting controllers other than supplied with this product.
- Unplug and allow to cool before changing the control setting.
- Store the product out of reach of children.
- Only use product in its intended location.
- Some metal parts in the product may have sharp edges. To prevent cuts, wear gloves when handling these parts.
- For use only in dry locations indoor.
- Do not use an extension cord to interlink two shop lights together.

Warning:

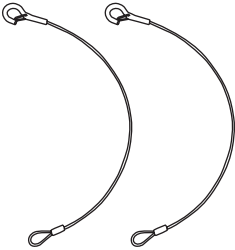
- The power socket is for linking with another shop light of the same model only. You can link up a total of six Winplus LED Indoor Shop Lights together. Please do not link up more than six Winplus LED Indoor Shop Lights together or link the lights with a different model.
- If the light is damaged, it shall be exclusively replaced by the manufacturer, service agent, or other qualified person in order to avoid a hazard.
- The warnings, precautions, and instructions discussed in this manual cannot cover all possible conditions and situations that may occur. The operator must understand that common sense and caution are factors which cannot be built into this product, but must be supplied by the operator.

Package Contains:

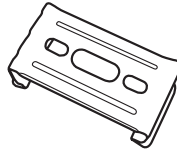
Please lay out all parts and read the instructions prior to installation.



1 x LED Indoor Shop Light with 1.5 m / 5 ft power cable



2 x Hanging wires



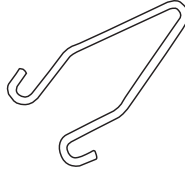
2 x Mounting brackets



1 x Measuring template



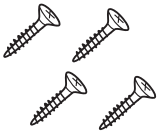
2 x Screw hooks



2 x Hanging hooks



2 x Plastic anchors



4 x Wood screws



1 x Instruction Manual

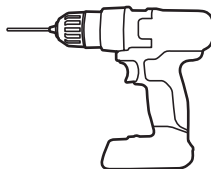
Distance	Time Until Dim (No motion)			Ambient Light Sensor	Brightness	Time Until Off (No motion)			
1	2	3	4	5	6	7	8	9	10
<input type="checkbox"/>	<input type="checkbox"/>	<input type="checkbox"/>	<input type="checkbox"/>	<input type="checkbox"/>	<input type="checkbox"/>	<input type="checkbox"/>	25%	<input type="checkbox"/>	Off
<input type="checkbox"/>	10%	<input type="checkbox"/>	Off	<input type="checkbox"/>	Off	<input type="checkbox"/>	50%	<input type="checkbox"/>	10:55
<input type="checkbox"/>	20%	<input type="checkbox"/>	10:55	<input type="checkbox"/>	Dark	<input type="checkbox"/>	75%	<input type="checkbox"/>	11:55
<input type="checkbox"/>	30%	<input type="checkbox"/>	10:55	<input type="checkbox"/>	Light	<input type="checkbox"/>	100%	<input type="checkbox"/>	10:55

1 x Smart Sensor control setting label

Tools Needed (not included)



Phillips head screwdriver



Drill



Safety glasses

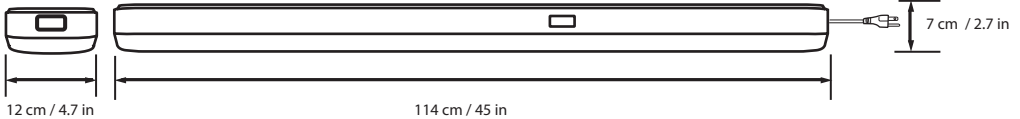
Product Specifications:

1. Input Voltage and Current: 120 Vac, 60 Hz, 4 A max
2. LED Wattage: 48 W / Stand-by mode: 1 W
3. Power Socket: 120 Vac, 3.5 A max
4. Light Output: 3800 lm
5. Color Temperature: 4000K
6. LED Life Cycles: up to 50,000 hrs
7. Weight: 2.23 kg / 4.91 lb
8. Operating Temperature: 0°C to 40°C / -4°F to 104°F
9. Power Cord Length: 1.5 m / 5 ft



This product is ETL Listed

Light fixture dimensions:



Installation Procedures:

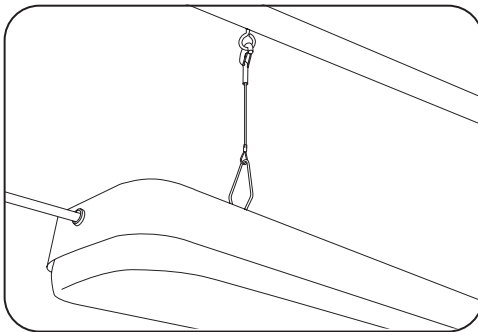
The product is intended to be connected to a plug and does not need to be switched on/off as it is controlled by the motion sensor. You do not need to disconnect from plug except for changing Smart Sensor Control setting.

You may link with another Winplus LED Indoor Shop Light of the same model number. Please refer to Page 8 for details.

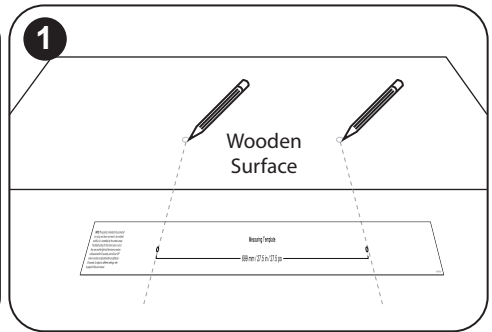
Due to the sensor's ability to detect movement through walls and doors, it is recommended to disable the motion sensor (see P.12) when installing the light in small rooms (e.g. storage closet, pantry, etc.) so movement outside these rooms cannot be picked up by the sensor. The light will operate through the Main switch in this scenario.

NOTE: The sensor can detect movement through walls and doors.

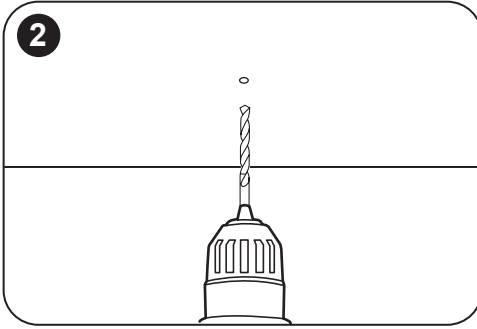
Ceiling hanging with hanging wires:



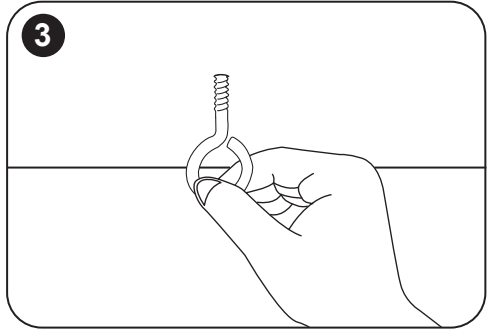
Final installed illustration



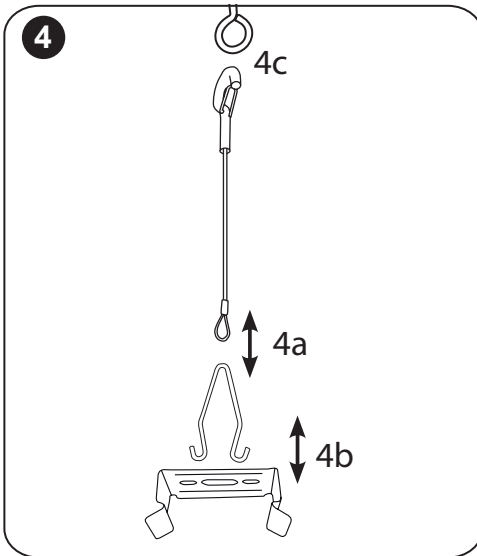
1. Select a suitable mounting location, and make sure the wooden surface is suitable for supporting the light. Use the measuring template to mark the hook locations on the mounting surface.



2. Wear safety glasses before drilling pilot holes.



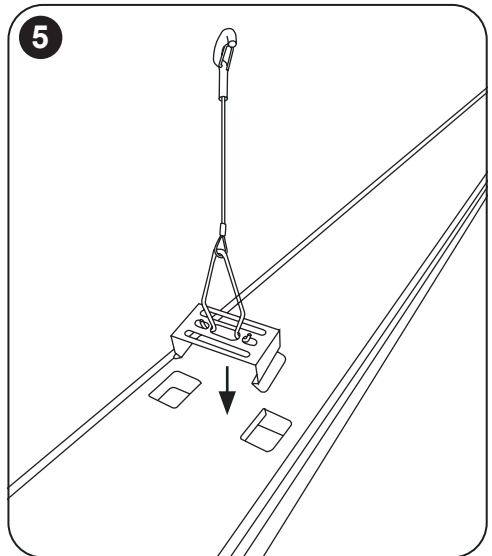
3. Screw in the screw hooks.



4a. Slip the hanging hook through the wire.

4b. Insert the hanging hook into the openings of the mounting bracket. Repeat for another mounting bracket.

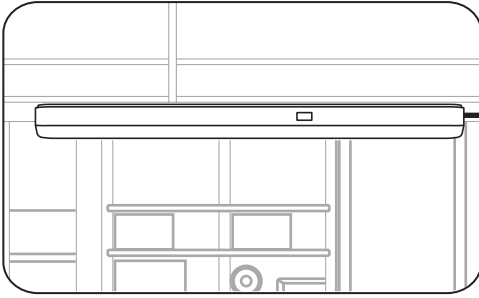
4c. Mount the wire onto the screw hook, and repeat for another wire and hook.



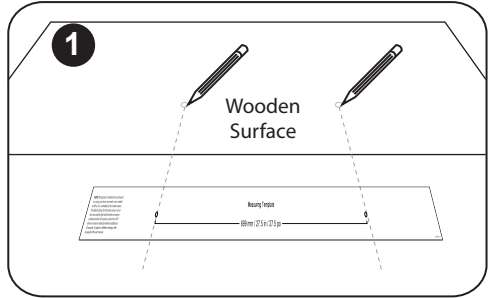
5. Clip mounting brackets onto the light.

The light is intended to be installed directly beneath a ceiling-mounted receptacle. The excess power cord should be kept out of the work space, such as by securing it to one of the supporting chains with a cable tie.

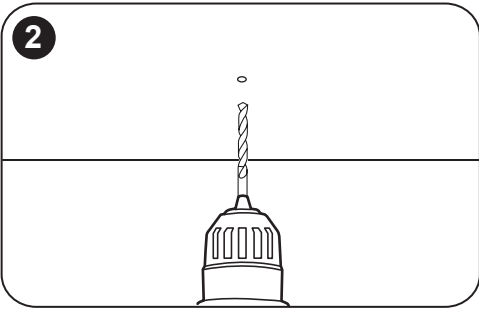
Ceiling flush mount:



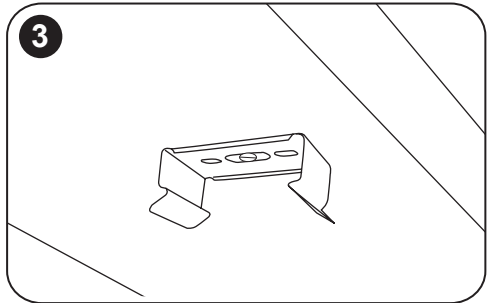
Final installed illustration



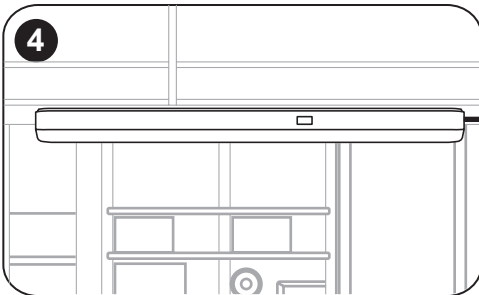
1. Select a suitable mounting location, and make sure the wooden surface is suitable for supporting the light. Use the measuring template to mark the hook locations on the mounting surface.



2. Wear safety glasses before drilling pilot holes.



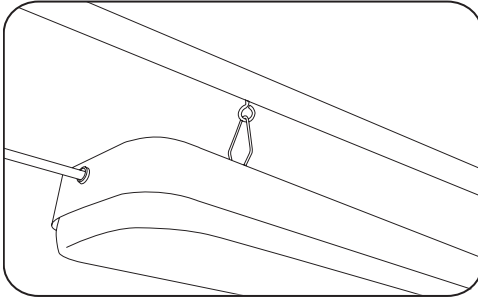
3. Screw the mounting bracket with the wood screw provided. Repeat for the second mounting bracket.



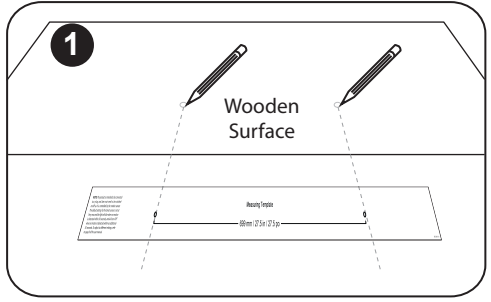
4. Clip mounting brackets onto the light.

Note: For concrete or drywall, you may use screws along with plastic anchors.

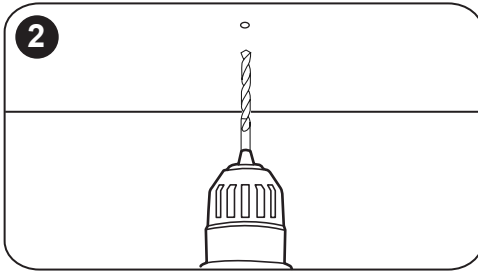
Ceiling hanging with hooks:



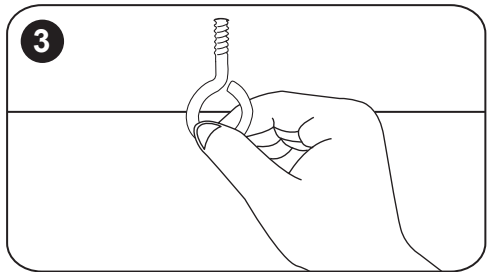
Final installed illustration



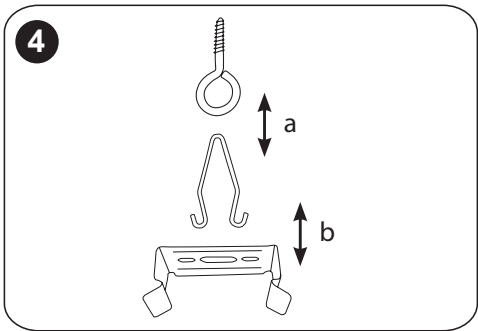
1. Select a suitable mounting location, and make sure the wooden surface is suitable for supporting the light. Use the measuring template to mark the hook locations on the mounting surface.



2. Wear safety glasses before drilling pilot holes.

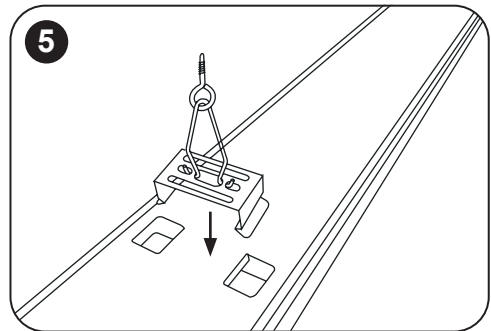


3. Screw in the screw hooks.



4a. Mount the hanging hook into the screw hook. Repeat for the second hanging hook.

4b. Insert the hanging hook into the middle opening of the mounting bracket. Repeat for the other mounting bracket.



5. Clip mounting brackets onto the light.

Link up multiple Shop Lights



Connect to power outlet

Connect to another shop light

Linkable up to six (6) Winplus LED Indoor Shop Lights

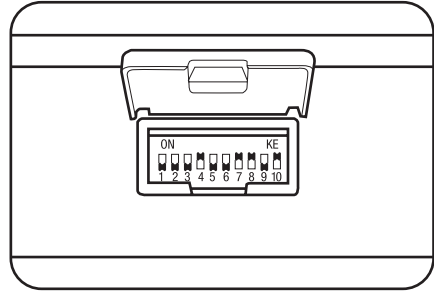
Smart Sensor Control Setting and Operation:

Unplug and allow the unit to cool before changing the control setting. You can use the light in different locations by selecting the Smart Sensor control setting that is most suitable for the desired location and use. Please refer to the following instructions for choosing the Smart Sensor control setting.

CAUTION: Unplug the power cord from the electrical outlet before adjusting the Smart Sensor control setting.

After unplugging the power cord, you can open the switch cover and select the most suitable Smart Sensor control setting accordingly.

The Smart Sensor control setting label may be placed on the light for future reference or left off.



Distance	Time Until Dim (No motion)	Ambient Light Sensor	Brightness	Time Until Off (No motion)
1 2	3 4	5 6	7 8	9 10
Very Near	30 Sec	Off	100%	30 Sec

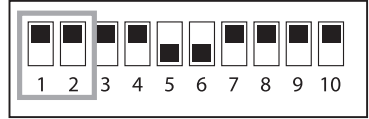
Smart Sensor Control Default Setting

Distance	Time Until Dim (No motion)	Ambient Light Sensor	Brightness	Time Until Off (No motion)
1 2	3 4	5 6	7 8	9 10
Very near	Off	Off	25%	Off
Near	30 Sec	Overcast	50%	30 Sec
Mid-range	10 Min	Dusk	75%	10 Min
Far	30 Min	Night	100%	30 Min

Smart Sensor Switch Settings

NOTE: Total duration the light is ON for includes Time Until Dim plus Time Until Off.

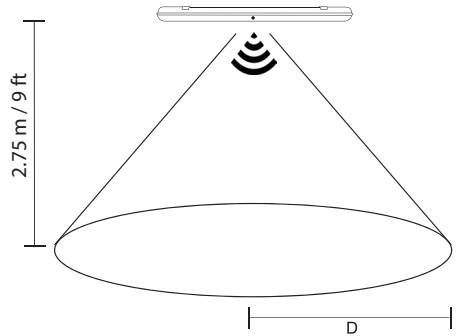
Definition of each Smart Sensor Control Setting:



Switches 1 & 2: Sensor Detection Distance

Sensor Detection Distance is the detection area of the smart sensor. You can choose from various settings: Very near, Near, Mid-range and Far. The sensing distance would be ranged from around 1 m / 3.2 ft to 8 m / 26.2 ft.. You may refer to the table below for the maximum sensing distance for the light installed at a height of 2.75 m / 9 ft.

Setting	Maximum Sensing Distance (D)
Very near	1 m / 3.2 ft - 3 m / 9.8 ft
Near	3 m / 9.8 ft - 4.5 m / 14.7 ft
Mid-range	4.5 m / 14.7 ft - 6 m / 19.6 ft
Far	6 m / 19.6 ft - 8 m / 26.2 ft



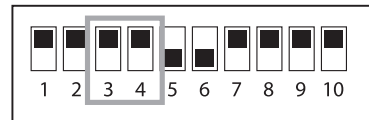
Any movement inside the detection zone will be detected by the motion sensor.

Actual sensing distance may be influenced by environment conditions.

For example, the sensing distance decreases in an open area free of objects. The distance increases in an area with lots of metallic objects.

NOTE: The detection distance is measured for a person approximately 1.7 m / 5.5 ft tall, moving at a speed of 1.0 - 1.5 m / sec / 3.2 - 4.9 ft / sec.

You may select 'Very near' or 'Near' for a small area, and select 'Mid-range' and 'Far' for a larger area.



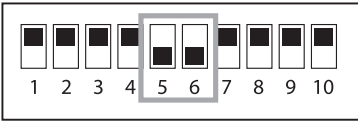
Switches 3 & 4: Time Until Dim (no motion)

Time Until Dim (No motion) is the time to dim the light when no movement is detected. You can choose from Off, 30 seconds, 10 minutes, or 30 minutes. The light will be dimmed if there is no movement detected by the sensor. Any movement detected within this period will restart the timer.

The light will be dimmed to 50% of preset brightness level setting. For example, if you select brightness level to 75%, then the light will be dimmed to 37.5% of full brightness.

Refer to switches 7 & 8 setting for brightness level setting.

Switches 5 & 6: Ambient Light Sensor

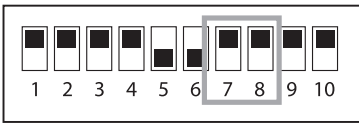


Ambient Light Sensor refers to the surrounding light level to keep light OFF during the day time regardless of any movement. You can choose from Off, Overcast, Dusk and Night. For example, if you set to Overcast, when the surrounding is bright enough, such as sunny day, the light will stay OFF even if motion has been detected. When the surrounding area is less bright than overcast and there is motion detected by the sensor, the light will turn ON. In 'Night' mode, the light will turn ON only when the surrounding is dark and there is motion detected by the sensor.

The "OFF" mode is for usage where you want to disable the light sensor function, i.e. the light is controlled by motion sensor only. This mode would be suitable for using in a parking lot, which you may want to keep the light always ON regardless of ambient light.

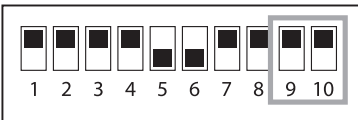
Note: Light sensor function will be disabled when Time Until Off (No motion) (Switches 9 & 10) is set to OFF

Switches 7 & 8: Brightness Level %



Brightness level refers to the brightness of the light. You can choose the brightness level from 25%, 50%, 75% and 100% from the full brightness.

Switches 9 & 10: Time Until Off (No motion)



Time Until Off (No motion) is the time for the light to turn OFF completely when there is no motion detected. You can choose from Off Mode, 30 seconds, 10 minutes, or 30 minutes. The light will be turned OFF when there is no motion detected within the preset time. Any movement detected within this period will restart the timer and the light will be turned on again.

If you have selected Time Dim function ON, the timer will start counting the Time Until Dim function (S3 & S4) and then the Time Until Off (S9 & S10). E.g. for S3 & S4 as 30 sec and S9 & S10 as 30 sec: the light will be dimmed down when no motion has been detected for 30 seconds and the light will be turned OFF when no motion is detected within 30 seconds after. Any movement detected within this period will restart the timer, and the light will turn on again.

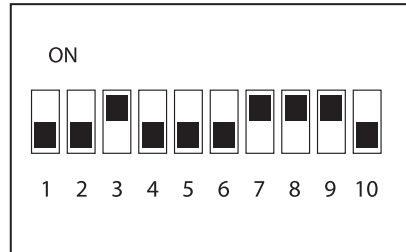
You can select "OFF" if you want to have the light turned ON at all times. By selecting this mode, the Ambient Light Sensor function will be disabled.

After choosing the desired Smart Sensor control setting, please close the switch cover properly. You can use the light after plugging in to the receptacle.

Some Recommended Settings:

Home Use / Garage:

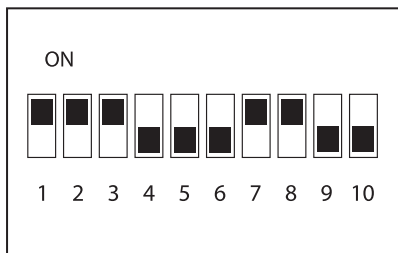
- 1 & 2 Distance: Very Near
- 3 & 4 Time Until Dim: 30 sec
- 5 & 6 Ambient Light Sensor: Off
- 7 & 8 Brightness Level: 100%
- 9 & 10 Time Until Off: 30 sec



The motion sensor covers a small area and the light will dim down when there is no movement detected within 30 seconds, and the light will completely turn off when no movement is detected within 30 seconds after.

Always On:

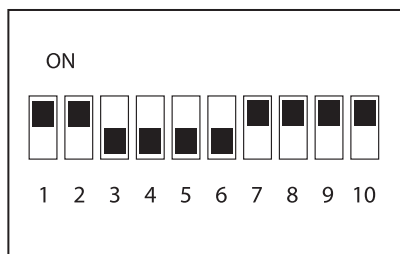
- 1 & 2 Distance: Far
- 3 & 4 Time Until Dim: 10 min
- 5 & 6 Ambient Light Sensor: Off
- 7 & 8 Brightness Level: 100%
- 9 & 10 Time Until Off: Off



By selecting this mode, the light will be ON all the time. When there is no movement within 10 min, the light will dim down. The light will return to full brightness when there is movement detected.

Office:

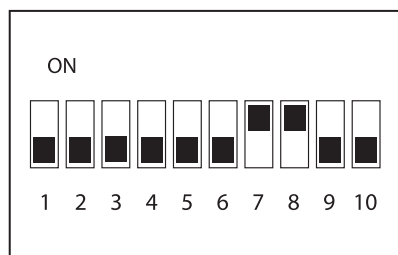
- 1 & 2 Distance: Far
- 3 & 4 Time Until Dim: Off
- 5 & 6 Ambient Light Sensor: Off
- 7 & 8 Brightness Level: 100%
- 9 & 10 Time Until Off: 30 min



The light will be completely off when there is no movement detected within 30 minutes

Disable Motion / Light Sensor:

- 1 & 2 Distance: Very near
- 3 & 4 Time Until Dim: Off
- 5 & 6 Ambient Light Sensor: Off
- 7 & 8 Brightness Level: 100%
- 9 & 10 Time Until Off: Off



You can choose this setting to simulate ordinary light and manually operate through the wall On/Off switch.

Troubleshooting:

Issue	Cause	Remedy
The light is not working	The light is not plugged in or the Main switch is OFF	Plug in and turn on the Main switch
	The ambient light sensor is ON and it switches OFF the light while the ambient is bright.	Change the Switches 5 & 6 to OFF, or other appropriate settings
The light is always ON	Continuous movement in the detection zone	Change Switches 1 & 2 settings to shorter distance, such as Very Near
	Motion sensor has been switched OFF	Change Switches 9 and 10 to other appropriate settings
The light is ON without any identifiable movement	Movement occurred (movement behind wall, movement of a small object in immediate lamp vicinity, etc.)	Change Switches 1 & 2 settings to shorter distance, such as Very Near
The light is not ON despite movement	Rapid movements are being suppressed to minimize malfunctioning of light or the detection zone you have set is too small	Check Switches 1 & 2 settings
	The ambient light sensor is ON and it switches OFF the light while the ambient is bright	Change the Switches 5 & 6 to OFF, or other appropriate settings

Maintenance:

CLEANING INSTRUCTIONS: When cleaning, make sure you have unplugged the light and allow it to cool to room temperature. Do not open the retaining clips when cleaning. The light can be cleaned with a feather duster or a soft damp cloth. You should plug in the light after it has been completely dried.

Warranty:

Winplus North America

This Winplus product carries a 1 year warranty against defects in workmanship and materials. This product is not guaranteed against wear or breakage due to misuse and/or abuse.

NOTE: Warranty only applies for North American customers of purchases made in North America.

Conditions of Warranty

If during the 1 year warranty period your new product is found to be defective, Winplus North America will repair such defect, or replace the product, without charge for parts or labor subject to the following conditions:

- All repairs must be performed by Winplus North America.
- All warranty claims must be accompanied by a copy of the sales receipt or bill of sale.
- The equipment must not have been altered or damaged through negligence, accident, improper operation, or failure to follow the product instructions for installation, use, or care.
- The replacement of parts is excluded from the warranty when replacement is necessary due to normal wear and tear.
- Repair or replacement parts supplied by Winplus North America under this warranty are protected only for the unexpired portion of the original warranty.
- This is a “repair or replace” warranty only, and does not cover the costs incurred for the installation, removal or reinstallation of the product.

OWNER’S RESPONSIBILITIES: Winplus North America will make every effort to provide warranty service within a reasonable period of time. SHOULD YOU HAVE ANY QUESTIONS ABOUT SERVICE RECEIVED OR IF YOU WOULD LIKE ASSISTANCE IN OBTAINING SERVICE, PLEASE CALL TOLL FREE 1.866.294.9244 DURING REGULAR BUSINESS HOURS MONDAY THROUGH FRIDAY 9:00 AM TO 5:00PM PST.

NOTE: Toll Free # is for North America Customers ONLY. See Customer service section for customer contact numbers for other regions/offices.

For customer service and technical support, please call us at 1.866.294.9244 or email us at info@winplususa.com. If at that time it is determined that a replacement unit is needed, the support representative will issue a Return Authorization and instruct on how to get a new unit.

Winplus North America makes no other warranty of any kind aside from the limited express warranty stated herein.

DISCLAIMER OF WARRANTIES, INCLUDING WARRANTY OF MERCHANTABILITY AND WARRANTY OF FITNESS FOR PARTICULAR PURPOSE: EXCEPT AS SPECIFICALLY SET FORTH HEREIN, NO WARRANTY OR REPRESENTATION, EXPRESS OR IMPLIED, IS MADE AS TO THE LED SHOP LIGHT. EXCEPT AS EXPRESSLY SET FORTH HEREIN, WINPLUS NORTH AMERICA AND/ OR ITS AFFILIATES EXPRESSLY DISCLAIMS, WITHOUT LIMITATION, ANY STATUTORY WARRANTIES AND ALL IMPLIED WARRANTIES, INCLUDING ANY IMPLIED WARRANTY OF MERCHANTABILITY OR FITNESS FOR A PARTICULAR PURPOSE.

FCC / IC Compliance Statement:

This device complies with Part 15 of the FCC rules and Industry Canada license-exempt RSS standard(s). Operation is subject to the following two conditions: (1) this device may not cause harmful interference, and (2) this device must accept any interference received, including interference that may cause undesired operation.

Warning: Changes or modifications to this unit not expressly approved by the party responsible for compliance could void the user's authority to operate the equipment.

The manufacturer is not responsible for any radio or TV interference caused by unauthorized modifications or change to this equipment. Such modifications or change could void the user's authority to operate the equipment.

This radio transmitter (IC: 7297A-55973) has been approved by Industry Canada to operate with the antenna types listed below with the maximum permissible gain indicated. Antenna types not included in this list, having a gain greater than the maximum gain indicated for that type, are strictly prohibited for use with this device.

This equipment has been tested and found to comply with the limits for a Class B digital device, pursuant to part 15 of the FCC Rules. These limits are designed to provide reasonable protection against harmful interference in a residential installation. This equipment generates, uses and can radiate radio frequency energy and, if not installed and used in accordance with the instructions, may cause harmful interference to radio communications. However, there is no guarantee that interference will not occur in a particular installation. If this equipment does cause harmful interference to radio or television reception, which can be determined by turning the equipment off and on,

the user is encouraged to try to correct the interference by one or more of the following measures:

- Reorient or relocate the receiving antenna.
- Increase the separation between the equipment and receiver.
- Connect the equipment into an outlet on a circuit different from that to which the receiver is connected.
- Consult the dealer or an experienced radio/TV technician for help.

The device has been evaluated to meet general RF exposure requirement.

To maintain compliance with FCC's RF exposure guidelines, this equipment should be installed and operated with a minimum distance of 20cm between the radiator and your body.

DISTRIBUTED BY:
COSTCO WHOLESALE CORPORATION
P.O. BOX 34535
SEATTLE, WA 98124-1535, USA
TEL: 1-800-774-2678
www.costco.com

MADE IN CHINA



Have a comment or question? Email us at info@winplususa.com
or visit us online at www.winplus.com

WINPLUS®

820 South Wanamaker Ave., Ontario, CA 91761, USA | Tel: 1-866-294-9244
© 2017 Winplus North America Inc. All rights reserved.